

LAND FOR SALE

4265 Thurmon Tanner Pkwy
Flowery Branch, GA 30542

CONTACT:

Alex Wayne

770-364-1888

alex@wayne-trading.com

ABOUT THE PROPERTY

- 2.84 Acres with level topography in Flowery Branch/Oakwood
- Zoned C-2 City of Oakwood

LOCATION INFORMATION

- At NW corner of Exit 14 on I-985 (Martin Road extension & Thurmon Tanner Pkwy)
- Near Tanners Creek Business Park, Oakwood South Industrial Park and Thurmon Tanner Business Corridor
- Perfect location for hotel, retail, restaurant or office
- Employers in the immediate area include: Wrigley's, Bitzer North America, Makita, PPG, TestRite, King's Hawaiian, Kubota, ZF and the Atlanta Falcons

PRICE

- \$ 1,500,000



Radial Property Group, LLC

Office: 770-967-4625

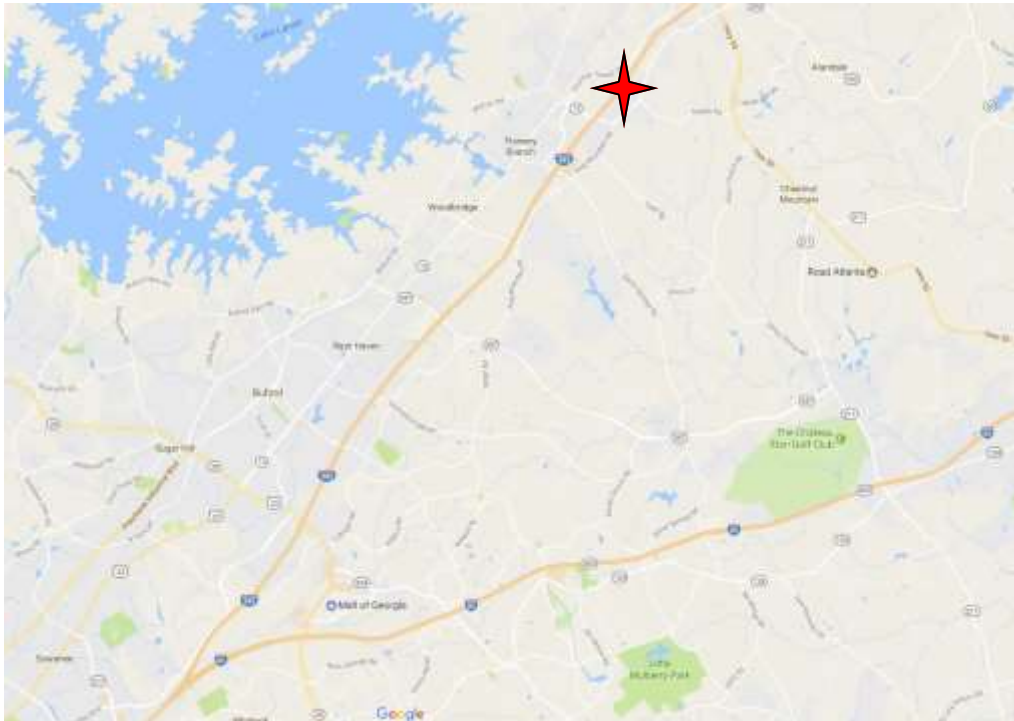
www.RPG-CRE.com

4265 Thurmon Tanner Pkwy
Flowery Branch, GA 30542

LOCATION INFORMATION

- Lot has frontage on both Thurmon Tanner Pkwy and new Martin Road extension
- Great visibility (less than 1/4 mile) from I-985
- Industrial area with business offices and no restaurants, retail, or hotels in the immediate neighborhood

LAND FOR SALE



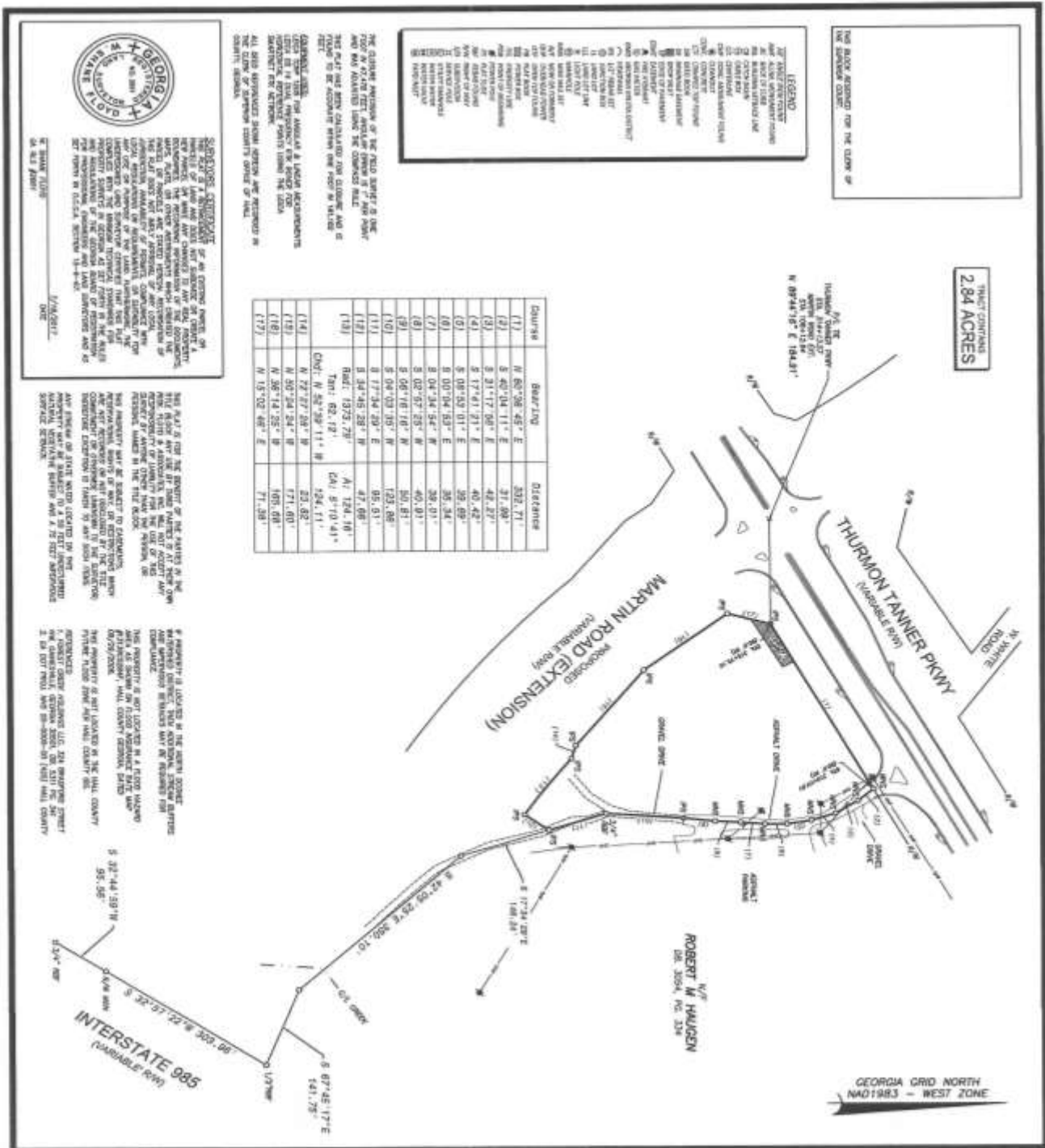
Radial Property Group, LLC

Office: 770-967-4625

www.RPG-CRE.com

4265 Thurmon Tanner Pkwy
Flowery Branch, GA 30542

LAND FOR SALE



Radial Property Group, LLC
 Office: 770-967-4625 www.RPG-CRE.com

The information contained herein is believed to be accurate; however, no liability is assumed for errors or omissions. The offering is subject to change or withdrawal without notice, and to approval by owner.