



## OFFICE/WAREHOUSE FOR LEASE

4582 Atwater Court  
Suite 7  
Buford, GA 30518

### CONTACT:

Brad Bowman  
770-718-8855  
brad@wayne-trading.com

### ABOUT THE PROPERTY

- 1,000 SF suite available for lease
- 50% Office, 50% Warehouse
- In Business Park off SR 20 with easy access to I-985, Exit 4
- Zoned M-1 (Light Industrial), City of Buford

### PRICE

- \$ 1,695 /month (Modified Gross)



Radial Property Group, LLC

Office: 770-967-4625

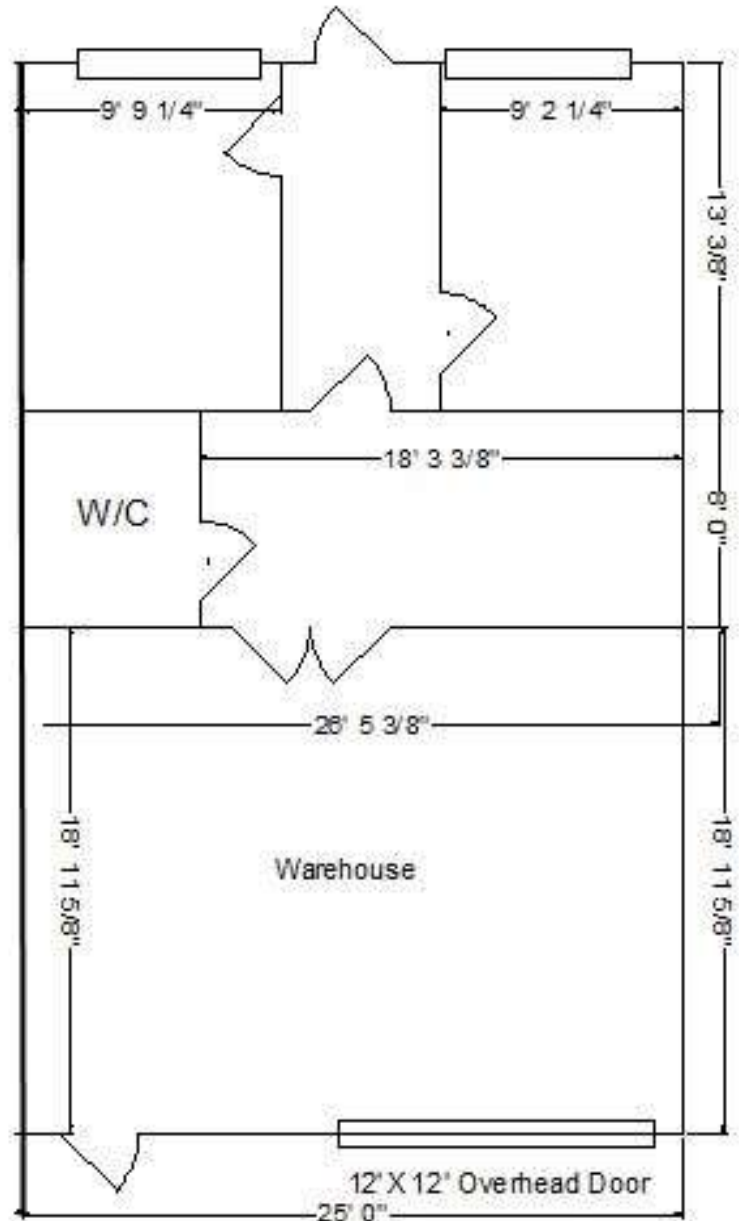
[www.RPG-CRE.com](http://www.RPG-CRE.com)

4582 Atwater Court  
Suite 7  
Buford, GA 30518

OFFICE/WAREHOUSE FOR LEASE

### Suite 7 Details

- Approximately 1,000 SF
- 50% Office, 50% Warehouse
- 1 bathroom, reception area, offices
- 1 Pedestrian entrance in front and 1 pedestrian entrance in rear
- 1 12'x12' drive-in door



All Dimensions are Approximate



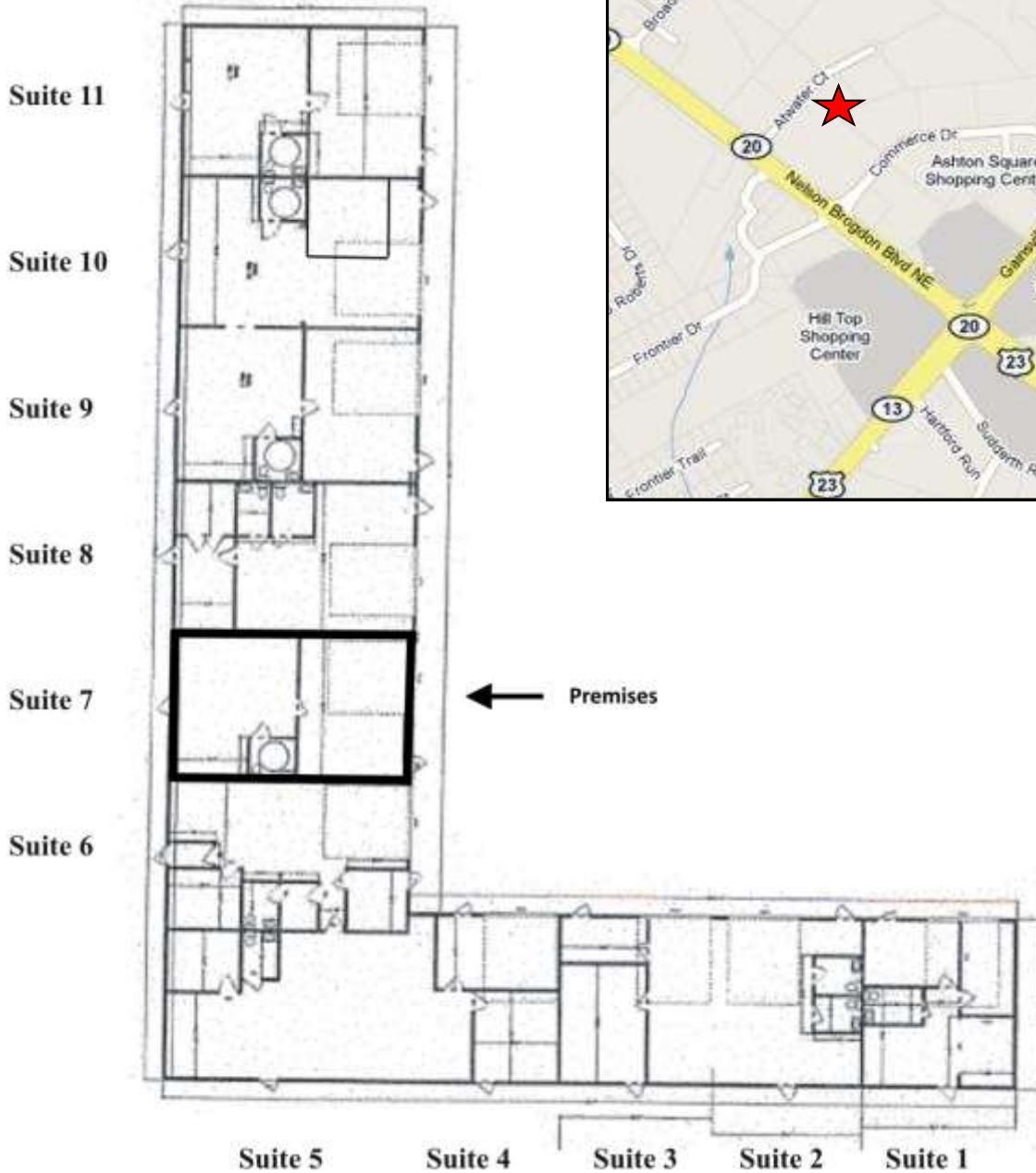
Radial Property Group, LLC

Office: 770-967-4625

[www.RPG-CRE.com](http://www.RPG-CRE.com)

4582 Atwater Court  
Suite 7  
Buford, GA 30518

PROPERTY LOCATION



Radial Property Group, LLC

Office: 770-967-4625

[www.RPG-CRE.com](http://www.RPG-CRE.com)