



OFFICE/WAREHOUSE FOR LEASE

4135 Industry Way
Flowery Branch, GA
30542

CONTACT:

Brad Bowman
770-718-8855
brad@wayne-trading.com

ABOUT THE PROPERTY

- 10,000 SF Office/ Warehouse Building Zoned I-1 (Light Industrial)

LOCATION INFORMATION

- In the Tanners Creek Business Park, a mixed-use office and industrial development
- Easy access to Thurmon Tanner Pkwy and I-985 (Exit 14)

PRICE

- \$12,500.00 per month
- Available Now!



Radial Property Group, LLC

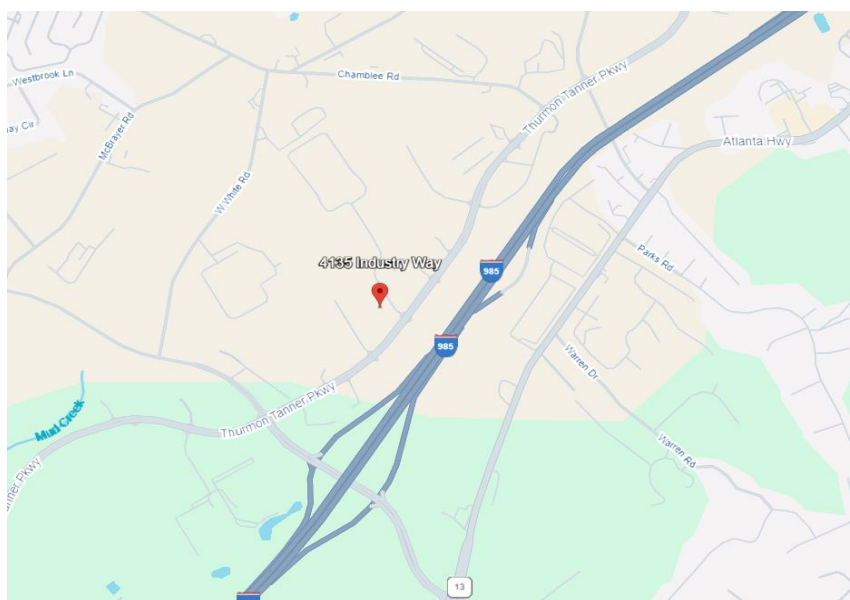
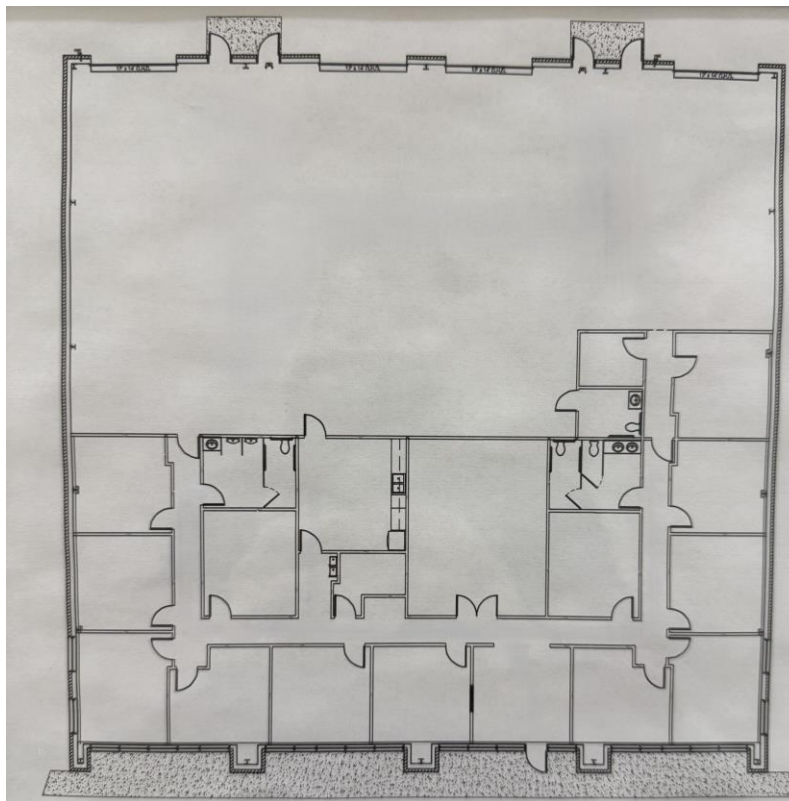
Office: 770-967-4625

www.RPG-CRE.com

4135 Industry Way Flowery Branch, GA 30542

Property Details

- 10,000 Sf – 50% Office, 50% Warehouse
- Spacious Offices
- Large Breakroom
- Conference Room
- Three Restrooms
- Four 12' x 14' Drive in Doors w/ electric openers
- Dock High forklift ramp on-site
- Approx. 800 Sq ft of mezzanine above offices

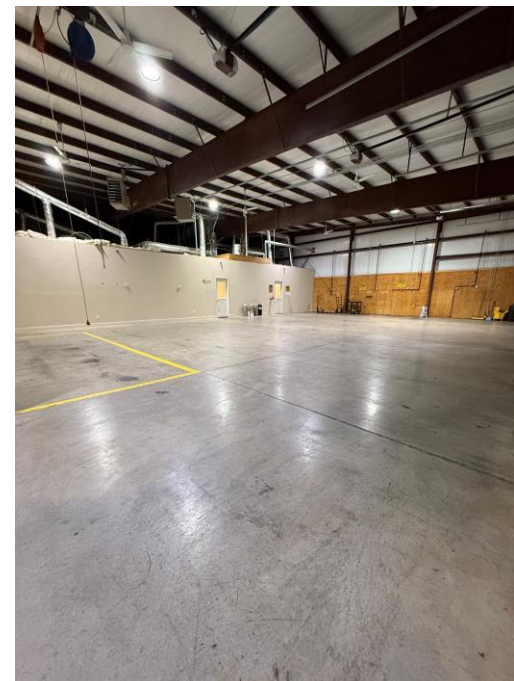
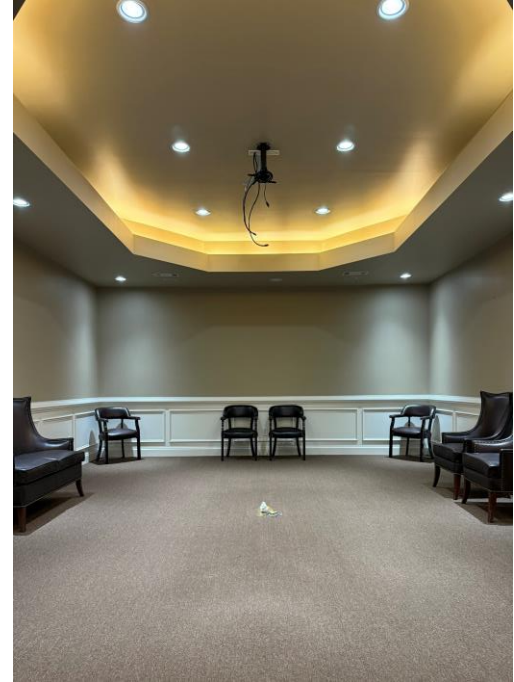


Radial Property Group, LLC

Office: 770-967-4625

www.RPG-CRE.com

4135 Industry Way
Flowery Branch, GA
30542



Radial Property Group, LLC

Office: 770-967-4625

www.RPG-CRE.com

4135 Industry Way
Flowery Branch, GA
30542



Radial Property Group, LLC

Office: 770-967-4625

www.RPG-CRE.com