



Representative Elevation

OFFICE/WAREHOUSE FOR LEASE

4060 Enterprise Way
Flowery Branch, GA
30542

CONTACT:

Brad Bowman 770-718-8855
brad@wayne-trading.com

Alex Wayne 770-364-1888
alex@wayne-trading.com

ABOUT THE PROPERTY

- 5,270 SF - 71,432 SF Office/Warehouse building
- High quality brick and block construction
- High speed internet available

LOCATION INFORMATION

- In the Tanners Creek Business Park, a mixed use office and industrial development
- Strong covenants protect the future of the development
- Easy access to Thurmon Tanner Pkwy and I-985
- New Interchange (Exit 14) Now Open

PRICE

- Lease rate varies based on size of unit and build-out

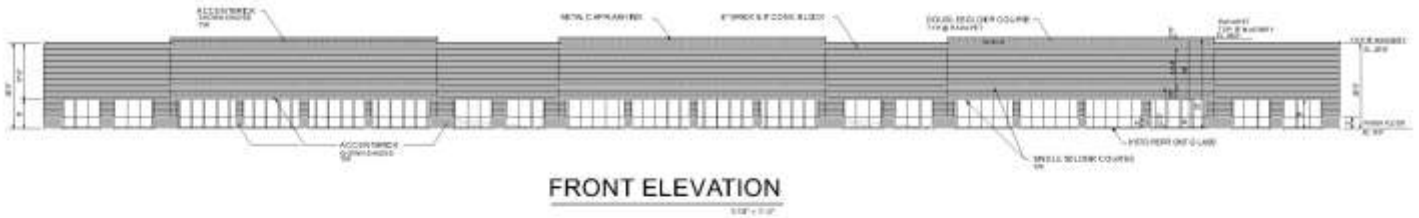


Radial Property Group, LLC

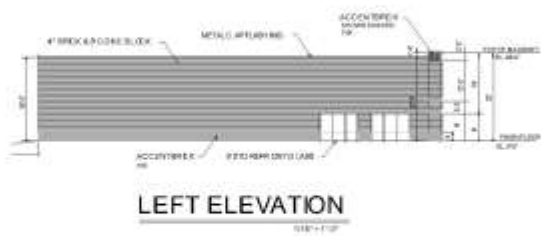
Office: 770-967-4625 www.RPG-CRE.com

4060 Enterprise Way
Flowery Branch, GA 30542

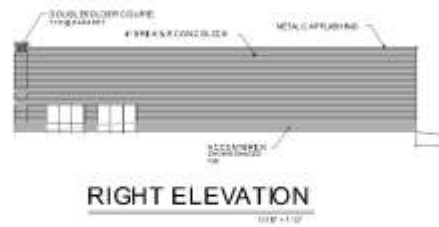
Representative Elevation



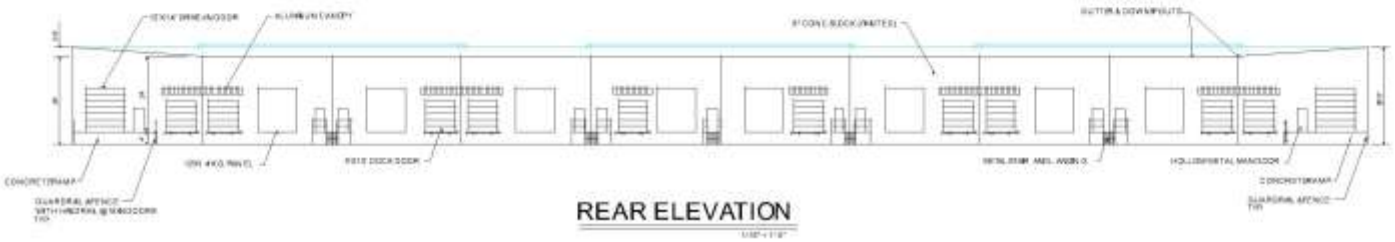
FRONT ELEVATION



LEFT ELEVATION



RIGHT ELEVATION



REAR ELEVATION



Representative Elevation

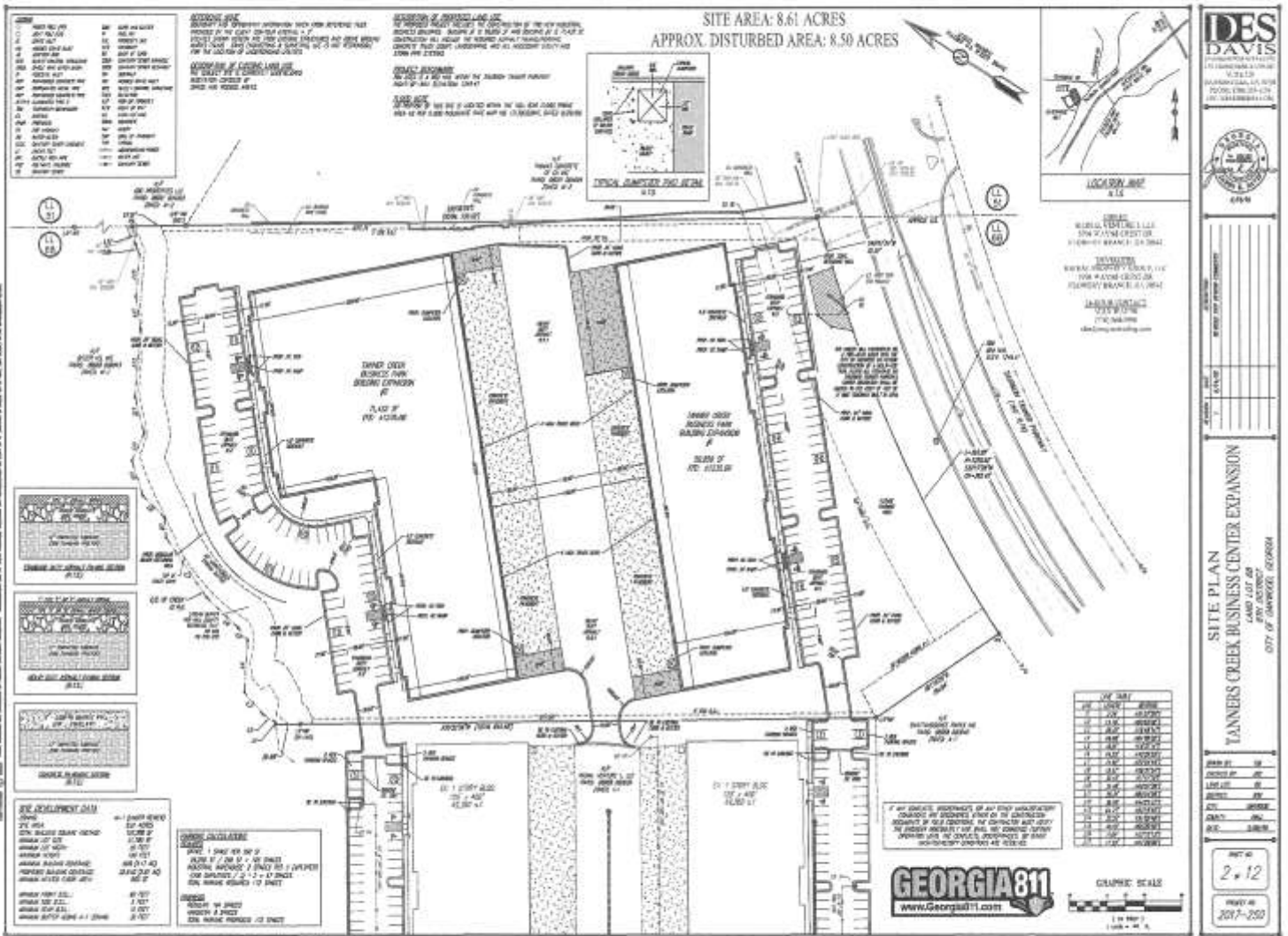


Radial Property Group, LLC

Office: 770-967-4625

www.RPG-CRE.com

4060 Enterprise Way
Flowery Branch, GA 30542



Radial Property Group, LLC

Office: 770-967-4625

www.RPG-CRE.com