



OFFICE SUITE FOR LEASE

4582 Atwater Court
Suite 11
Buford, GA 30518

CONTACT:

Brad Bowman
770-718-8855
brad@wayne-trading.com

ABOUT THE PROPERTY

- 1,000 SF suite available for lease
- Currently 50% office 50% warehouse

LOCATION INFORMATION

- In Business Park off SR 20 with easy access to I-985, Exit 4
- Zoned M-1 (Light Industrial), City of Buford

PRICE

- \$1,395/month



Radial Property Group, LLC

Office: 770-967-4625

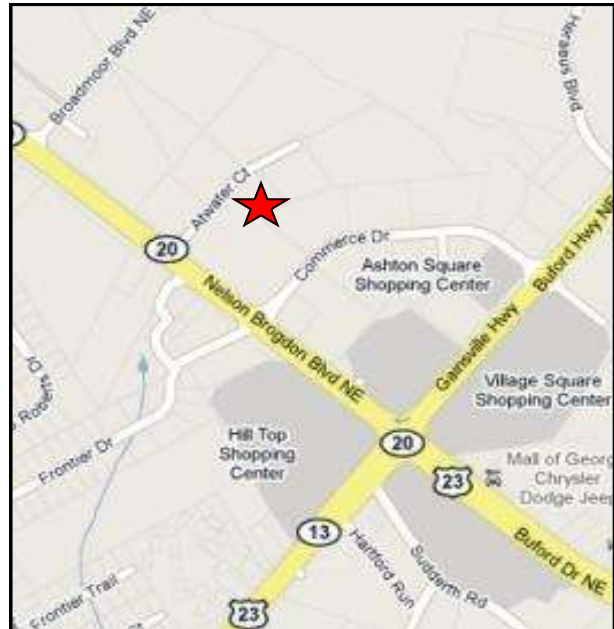
www.RPG-CRE.com

4582 Atwater Court
Suite 11
Buford, GA 30518

PROPERTY LOCATION

Suite 11

- Approximately 1,000 SF
- 50% Office 50% warehouse
- 1 bathroom and open office
- 1 Pedestrian entrance in front and
1 pedestrian entrance in rear



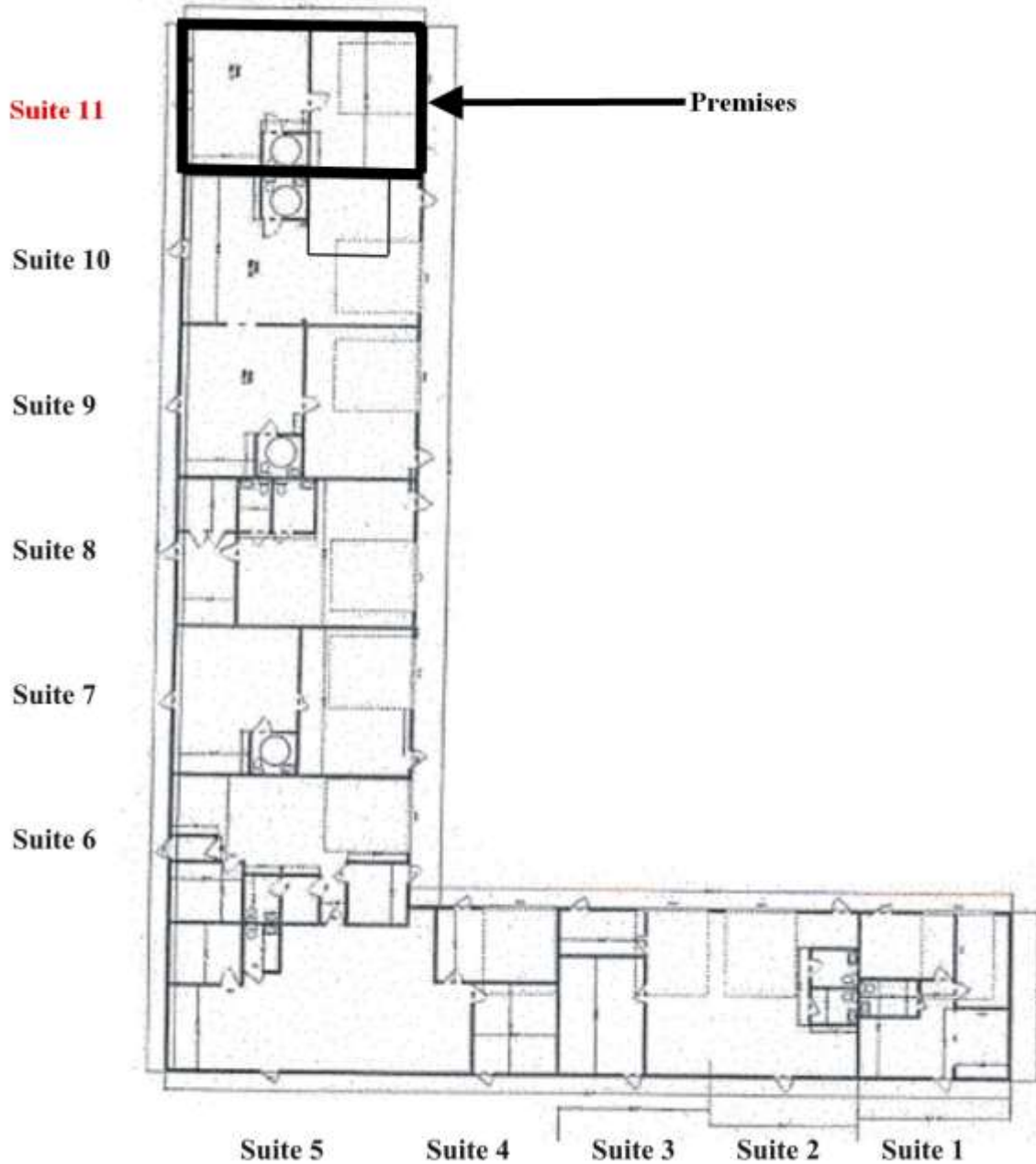
Radial Property Group, LLC

Office: 770-967-4625

www.RPG-CRE.com

4582 Atwater Court
Suite 11
Buford, GA 30518

FLOOR PLANS



Radial Property Group, LLC

Office: 770-967-4625

www.RPG-CRE.com