



# OFFICE SUITE FOR LEASE

4582 Atwater Court  
Suite 11  
Buford, GA 30518

## CONTACT:

Raul Menjivar

770-654-0933

[raul@rpg-cre.com](mailto:raul@rpg-cre.com)

## ABOUT THE PROPERTY

- 1,000 SF suite available for lease
- 50% Office 50% Warehouse

## LOCATION INFORMATION

- In Business Park off SR 20 with easy access to I-985, Exit 4
- Zoned M-1 (Light Industrial), City of Buford

## PRICE

\$1,795 per month



Radial Property Group, LLC

Office: 770-967-4625

[www.RPG-CRE.com](http://www.RPG-CRE.com)

# 4582 Atwater Court Suite 11 Buford, GA 30518

## SUITE 11 DETAILS

- Approximately 1,000 SF
- 50% Office 50% Warehouse
- 1 Bathroom and open office
- 1 Pedestrian entrance in front
- 1 Pedestrian entrance in rear
- 12 x 12 Overhead Door



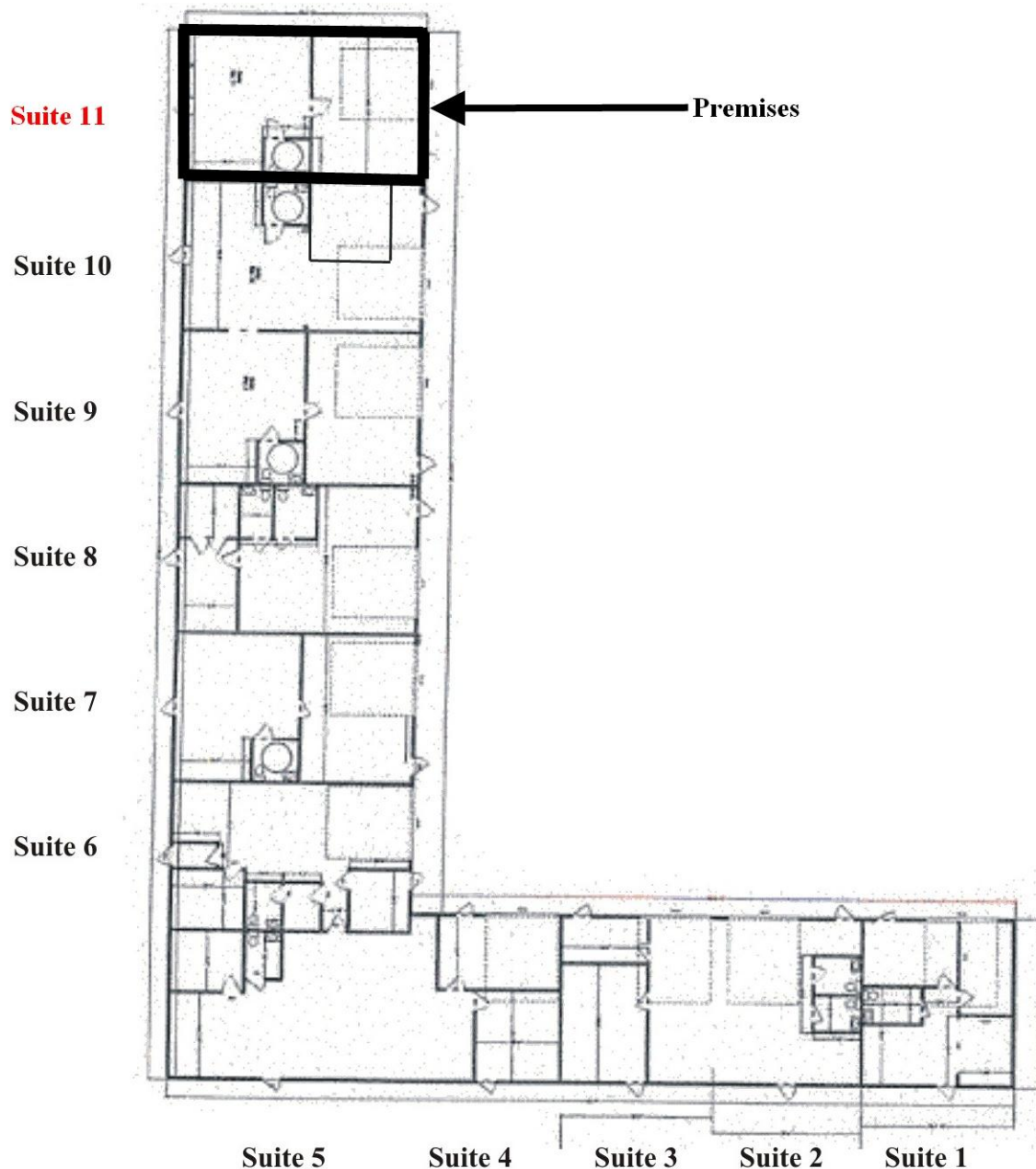
Radial Property Group, LLC

Office: 770-967-4625

[www.RPG-CRE.com](http://www.RPG-CRE.com)

4582 Atwater Court  
Suite 11  
Buford, GA 30518

FLOORPLAN



Radial Property Group, LLC

Office: 770-967-4625

[www.RPG-CRE.com](http://www.RPG-CRE.com)